

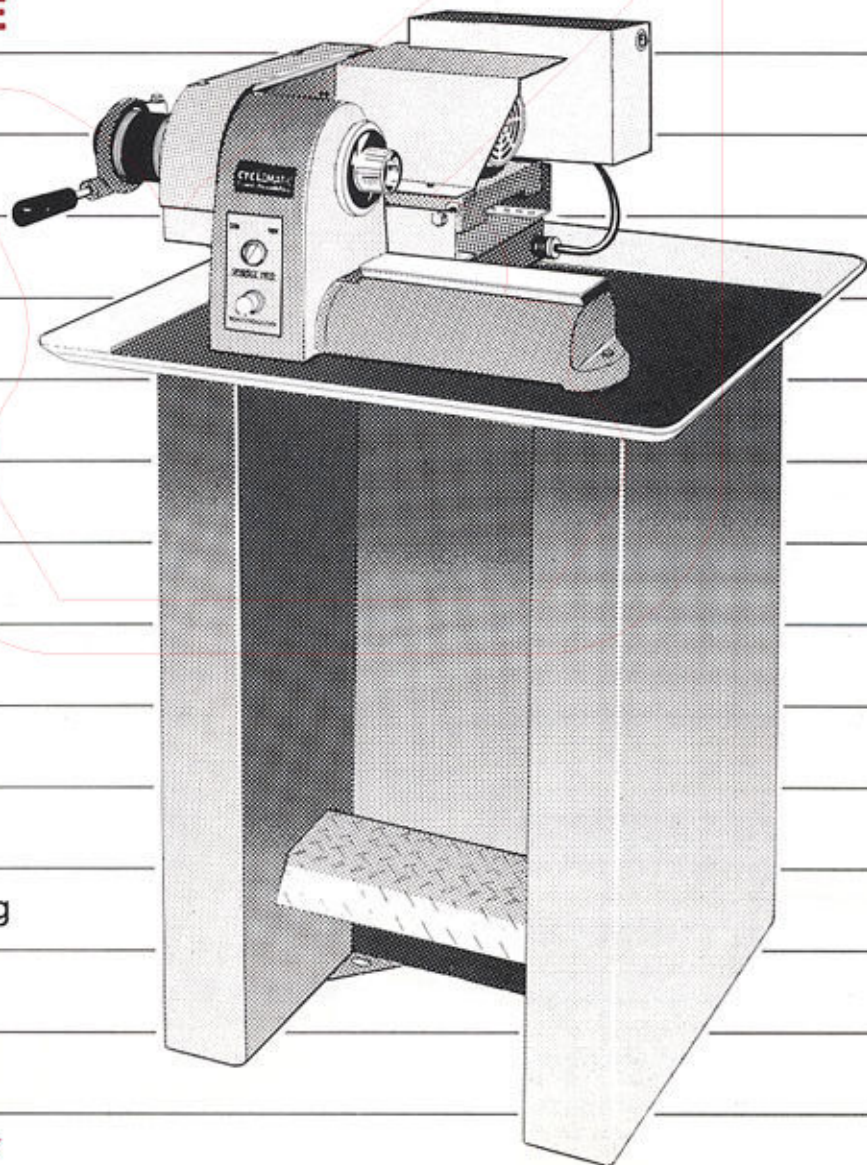
CYCLEMATIC

High Accuracy Machine Tools

**HIGH SPEED
HIGH ACCURACY**

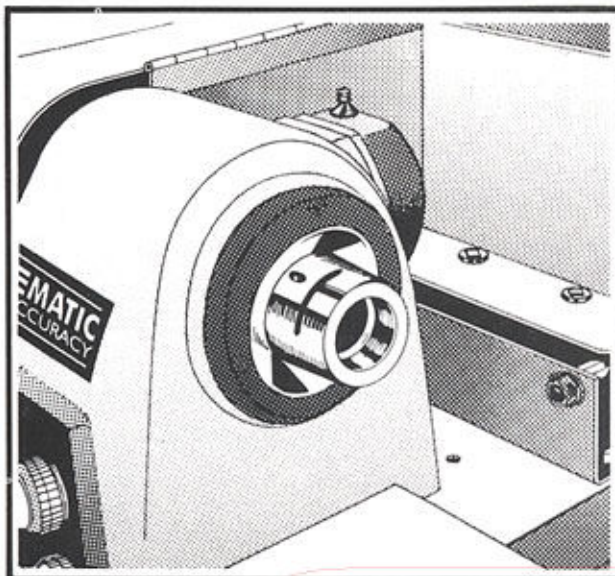
HIGH PERFORMANCE

FINISHING LATHE



- Compact
- Welded Steel Pedestal
- High Accuracy Spindle
- Hardened and Ground Precision Steel Bed Ways
- Fast Setup
- Easy Operation
- Fast Lever Collet Chucking
- Wide Chip Pan
- Comfortable Foot Rest

MODEL CP-27



HEADSTOCK FEATURES

- Preloaded Ball Bearing Spindle
- 1-1/16" 5C Collet Capacity
- Precision Taper Nose Spindle for Mounting Tooling
- Solid One-Piece Totally Enclosed Frame
- Spindle Speeds: 750, 1800, 3000 (r.p.m.)

HIGH ACCURACY SPINDLE

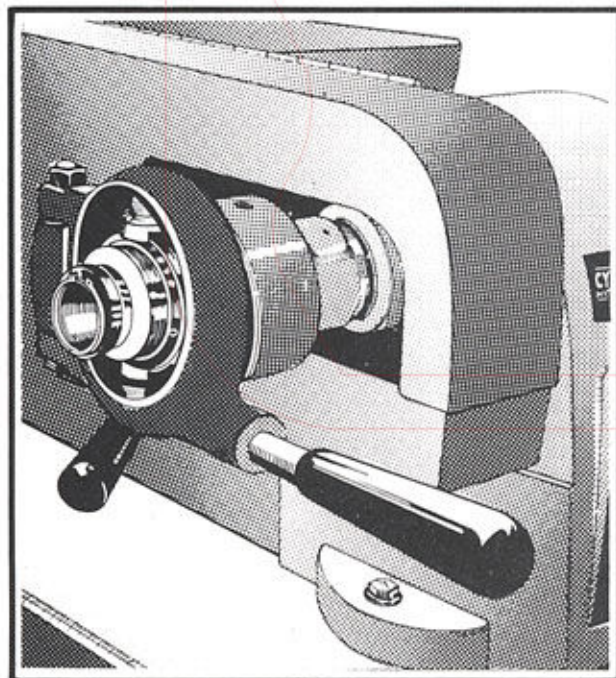
The high accuracy preloaded ball bearing spindle is mounted in the solid, one-piece totally enclosed headstock housing for maximum rigidity and sustained accuracy.

The bearings require no adjustment and are permanently lubricated to operate at all speeds without attention. Pre-loading eliminates all end play, radial play and assures the turning of true pieces.

The collet seats directly in the hardened and precision ground spindle, thus eliminating troublesome sleeves and adapters that introduce costly inaccuracies.

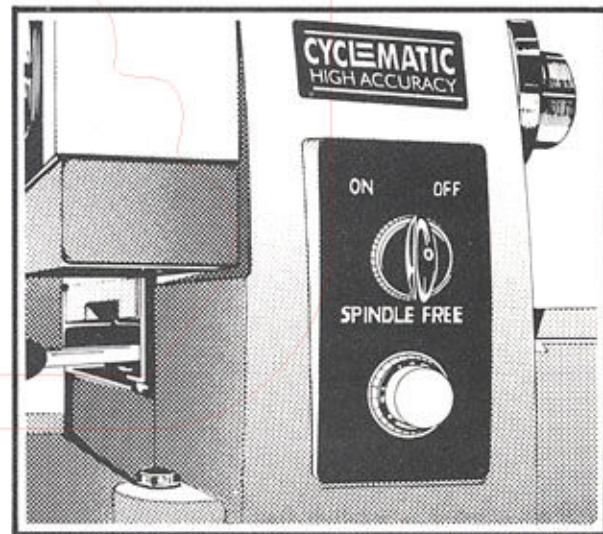
The rigidity provided for sustained accuracy also provides the proper support for work when cutting with carbide tooling.

The spindle nose TIR is guaranteed not to exceed fifty millionths of an inch.



FAST LEVER COLLET CHUCKING

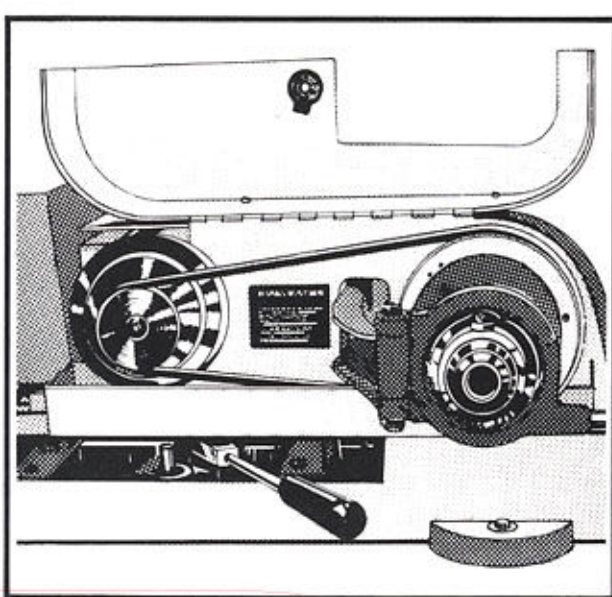
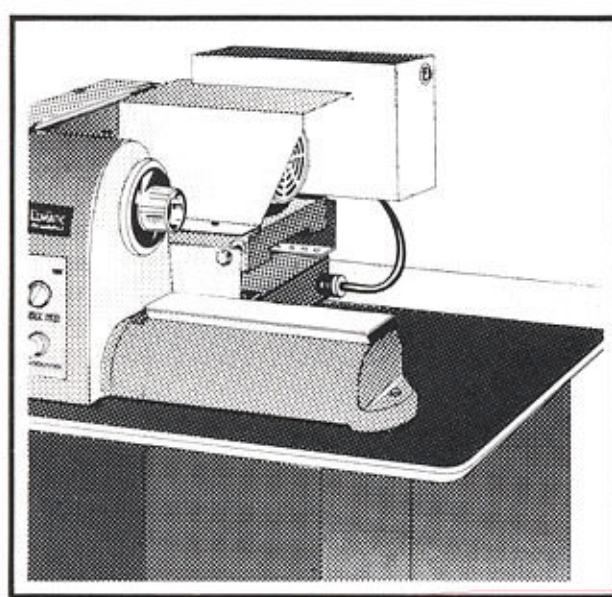
The lever control end of the closer assembly is balanced and rides on a precision bearing. Movement to the left closes the collet, and to the right opens the collet.



FAST ON-OFF CONTROL AND FREE SPINDLE

The ON-OFF switch control is easy and fast to operate. A short movement of the switch control to the left, "ON", starts the machine spindle. The control then automatically returns to a neutral vertical position. Movement to the right or "OFF" position shuts off the electric motor, engages the electric brake, stopping the spindle.

To release the brake, push the "SPINDLE FREE" button.

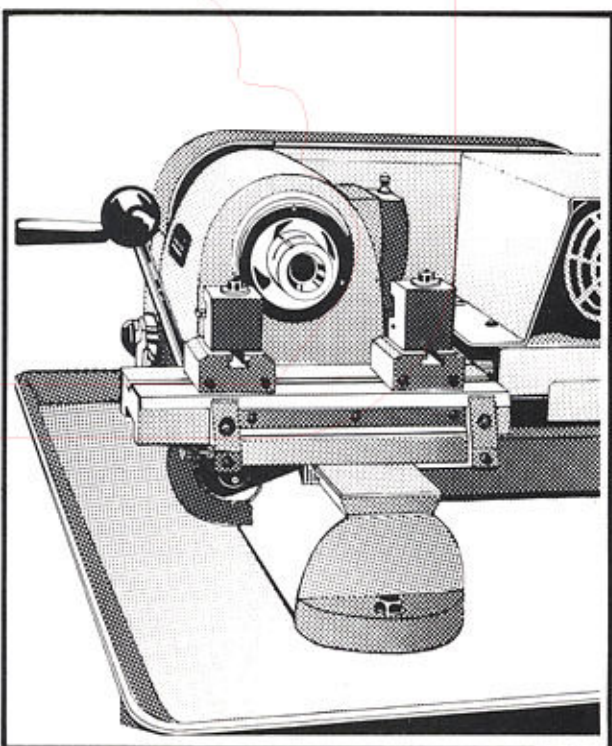
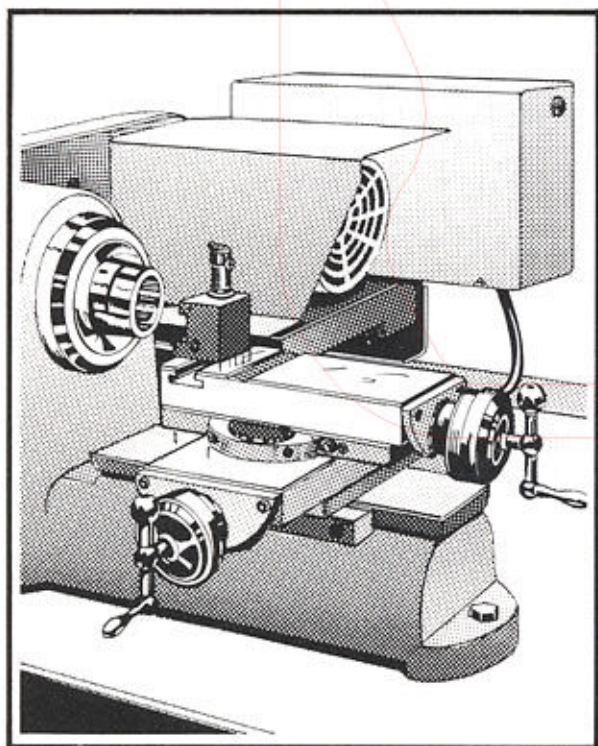


HARDENED/PRECISION GROUND STEEL WAYS

QUICK CHANGE SPINDLE SPEEDS

The bed ways are solid hardened and ground steel. There is no weakness of a center slot. The bed is easy to keep clean, will resist wear, and chips cannot fall upon the angular slide ways.

Spindle speeds are provided of 750, 1800 and 3000 RPM through an endless V-belt and three step pulley arrangement. Spindle speeds are quickly and simply changed. Raise the pulley and belt cover as shown. Move the lever horizontally to the extreme left. This will slide the motor pulley to the "belt release" position. Change belt to the pulley step desired and return the lever to the extreme right or "belt tight" position. Close the cover and the machine is ready for operation.

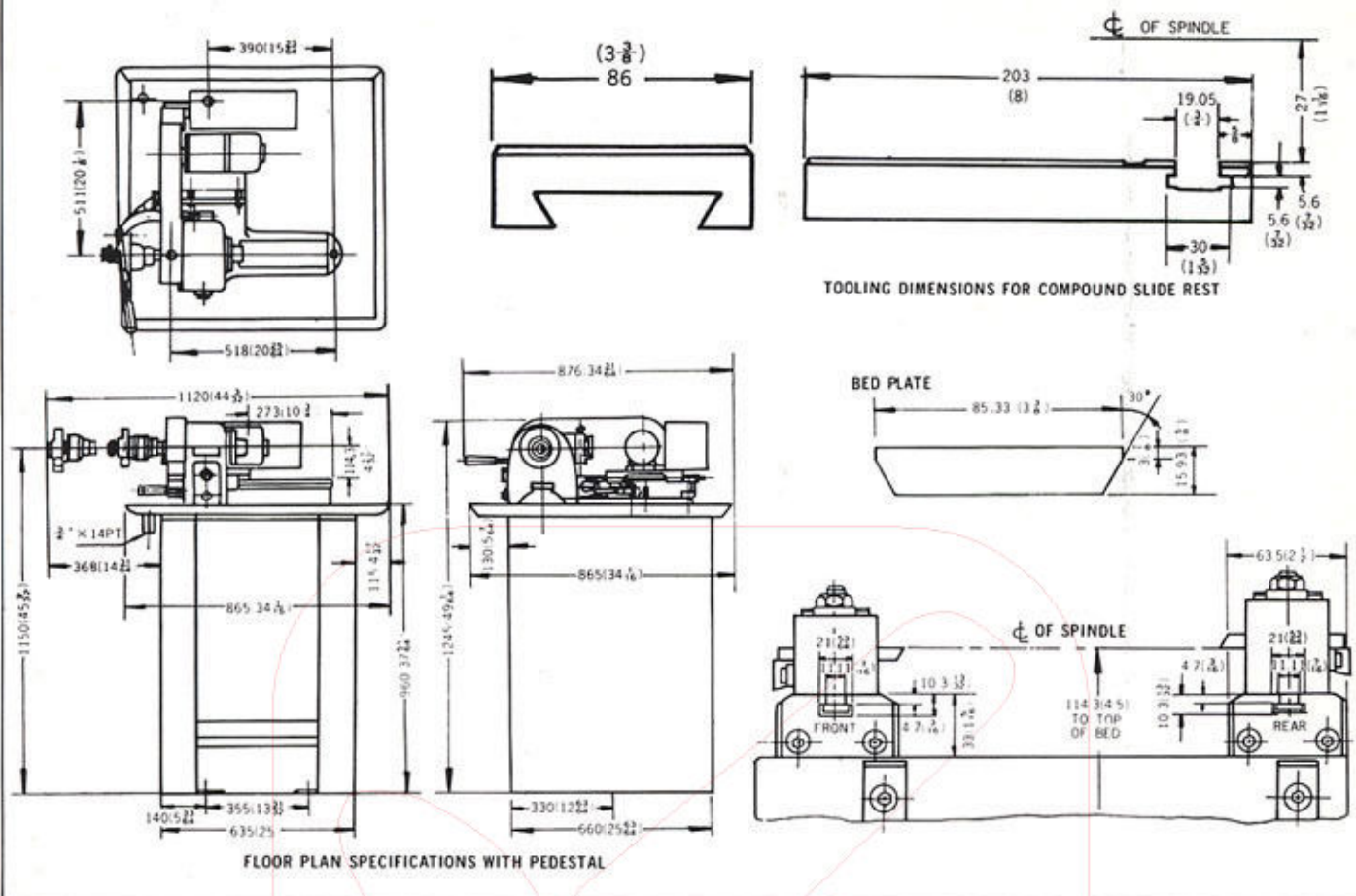


OPTIONAL X-Y AXIS COMPOUND SLIDE

OPTIONAL DOUBLE TOOL CROSS SLIDE

CYCLEMATIC

High Accuracy Machine Tools



FLOOR PLAN SPECIFICATIONS WITH PEDESTAL

TOOLING DIMENSIONS FOR COMPOUND SLIDE REST

BED PLATE

CP-27 SPECIFICATIONS

REGULAR EQUIPMENT

- SPINDLE CAPACITY**
- WITH ROUND 5C COLLETS 1-1/16" (27mm)
 - WITH HEXAGON 5C COLLETS 7/8" (22mm)
 - WITH SQUARE 5C COLLETS 3/4" (19mm)
 - WITH STEP CHUCKS 6" (152.4mm)
 - WITH JAW CHUCKS 5" (127mm)
 - WITH EXPANDING COLLETS 3" (76mm)
- SPINDLE SPEEDS** 750, 1800, 3000 RPM
- SWING OVER BED** 9" (229mm)
- LENGTH OF BED FROM FACE OF SPINDLE** .. 10" (254mm)
- SPINDLE DRIVE MOTOR** 1/2 HP
- WEIGHT (WITHOUT PEDESTAL) - APPROXIMATE** 300LB (136kg)
- WEIGHT (WITH PEDESTAL) - APPROXIMATE**
- 650LB (295kg)
- WEIGHT (WITHOUT PEDESTAL) SHIPPING - APPROXIMATE**
- 450LB (205kg)
- WEIGHT (WITH PEDESTAL) SHIPPING - APPROXIMATE** ..
- 825LB (375kg)

- Fully Enclosed 9" Swing Headstock
- Preloaded Ball Bearing Spindle
- Hardened and Precision Ground Taper Nose Spindle with 1-1/16" 5C collet capacity
- Ball Bearing Lever Collet Closer
- Standard Hardened and Ground Steel Bed Ways.
- Solid One Piece Headstock and Bed Construction
- Automatic Spindle Brake built into Motor Drive
- Convenient Brake Release for free spindle
- Built-in Start-Stop Selector Switch
- Magnetic Electric Control Panel with transformer providing 110 volts for control circuit; time lag thermal overload relays provide overload protection; low voltage protection is also provided; entire panel is one self-contained unit.

DISTRIBUTOR:

MANUFACTURER:
CYCLEMATIC MACHINERY CO.,LTD.
 20, LANE 50,MIN SHENG RD.,
 SHEN KANG, TAICHUNG, TAIWAN.
 TEL:04-5625393 / 5626509 FAX:886-4-5620298
 E-mail : matic88@ms77.hinet.net
 http : //www.cyclematic.com
 http : //www.cyclematic.com.tw
 http : //www.Toolrooms.com
 http : //www.Toolroom.com.tw