

CYCLEMATIC PRECISION **LATHE**

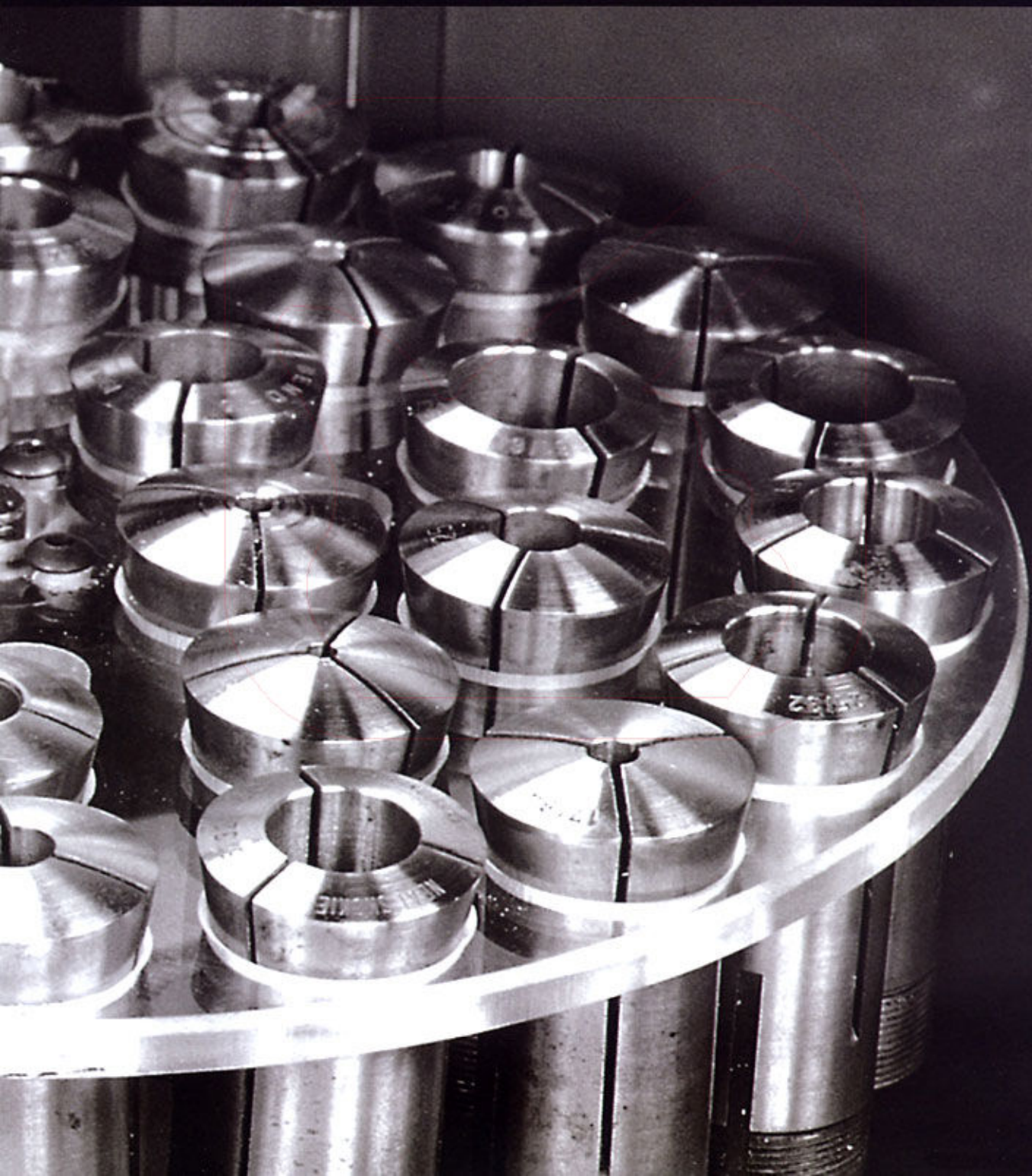
TOOLROOMS / SECOND OPERATION CHUCKING / FINISHING

GUARANTEED CIRCULARITY ACCURACY to 0.0015 mm (50 millionths inch)

Designing, Engineering And Manufacturing To The Highest Accuracy Standards!

CYCLEMATIC

FOUNDED IN 1980
25-YEAR EXPERIENCE





✦ **CT - 1118CNC** Splash Guard is available

- ✦ Guaranteed Circular Accuracy 0.0015mm (50 millionths of an inch)
- ✦ Teach-In Programming (Optional)
- ✦ Combines CNC and Manual Operations on A Single Machine.
- ✦ CE Standard Splash Guard (Optional)
- ✦ Precision ball screw on X, Z-axes
- ✦ Protection guard on Z-axis ball screw
- ✦ FANUC CNC controller
- ✦ X, Z-axis feed is driven by a AC servo motor.
- ✦ X, Z-axis ball screws directly coupled to AC servo motor, minimizing backlash.
- ✦ Fast lever collet chucking with a single movement.
- ✦ Power collet closer (Optional).
- ✦ The spindle is mounted in high precision preloaded angular contact ball bearings eliminating radial and end play.
- ✦ A wide variety of optional accessories to increase versatility of the machine.
- ✦ Powerful 5 HP frequency controlled motor

The way of viewing products of CYCLEMATIC:

Please visit website www.machinesources.com and key in the video serial number



EA50913

to watch the product running in actual production environment.



✦ **CT - 1118CNC** 3 Door Splash Guard

✦ **CT - 1118CNC** 4 Door Splash Guard is available



EA50913



✦ **CT - 606CNC** Splash Guard is available

✦ **POWER COLLECT CLOSER**



✦ **GANG TYPE**



- ✦ **Guaranteed Circular Accuracy 0.0015mm (50 millionths of an inch)**
- ✦ **Gang-Type Tooling System**
- ✦ **CE Standard Splash Guard (Optional)**
- ✦ **X, Z-axis MPG Handwheel (Optional)**

- ✦ Precision ball screw on X, Z-axes
- ✦ Linear motion guides on X, Z-axes
- ✦ Steel telescopic way guards on Z-axis provide better protection.
- ✦ X, Z-axis feed is driven by a AC servo motor.
- ✦ X, Z-axis ball screws directly coupled to AC servo motor, minimizing backlash.
- ✦ Fast lever collet chucking with a single movement.
- ✦ Power collet closer (Optional).
- ✦ The spindle is mounted in high precision preloaded angular contact ball bearings eliminating radial and end play.
- ✦ A wide variety of optional accessories to increase versatility of the machine.
- ✦ Powerful 5 HP frequency controlled motor



- ✦ **CT - 606CNC** 4 Door Splash Guard
- ✦ **CT - 606CNC** 3 Door Splash Guard is available

CTL - 618e

HIGH SPEED / HIGH ACCURACY TOOLROOM LATHE

MANUAL MODEL



NEW Design

The First Choice of Toolmakers!

- ✦ Good for pitch and module turning processing without any gears in gearbox. Easy exchange of decimal and GB system, accuracy goes up to three digits after decimal point.
- ✦ Digital data shows R.P.M. of spindle and tool infeed to let operator arrange best possible turning process combination.
- ✦ Digital data showing electric current for easy checking overload turning.
- ✦ Rapid retract function is available for shortened pitch module turning processing time.



- ✦ CPU designed specifically for fast, reliable controls. Interface display monitor by Fuji.

CTL - 618EVS

HIGH SPEED / HIGH ACCURACY TOOLROOM LATHE

MANUAL MODEL



Control Panel

The First Choice of Toolmakers!

- ✦ Ruggedly Constructed to Withstand Continuous Production.
- ✦ With Inch / Metric Dual Systems
- ✦ 280mm (11") Swing over bed.
- ✦ 457mm (18") distance between centers.
- ✦ Dual range Inch / Metric quick change gearbox.
- ✦ Infinitely variable spindle speeds from 0-4000 RPM
- ✦ Fast lever collet chucking with a single movement.
- ✦ Automatic thread length control with fine adjustable stops provides for accurate thread relief.
- ✦ Full bearing carriage with Turcite-B slideway bearing material between carriage and bed.
- ✦ Solid hardened and ground alloy tool steel bed.
- ✦ The spindle is mounted in high precision preloaded angular contact ball bearings eliminating end play.

CTL - 27EVS

MANUAL MODEL

HIGH SPEED / HIGH ACCURACY SECOND OPERATION / TOOLMAKER'S LATHE



Control Panel

- ✦ High/Low Speed Quick Change Lever for Convenience.
- ✦ Screw Feed Tailstock.
- ✦ X, Z Axis Compound Slide.
- ✦ Designed to Machine Precision Small Diameter Parts!
- ✦ High Performance Machining Capability of Shaft, Chucking or Collet Held Workpiece!
- ✦ 229mm (9") swing over bed.
- ✦ The spindle is mouted in high precision preloaded angular contact ball bearings eliminating radial and end play.
- ✦ Fast lever collet chucking with a single movement.
- ✦ Variable spindle speeds 0-4000 RPM.
- ✦ Solid hardened and ground alloy tool steel bed ways.
- ✦ Powerful 5 HP frequency controlled motor.

EA50906

CTS - 27EVS

MANUAL MODEL

HIGH SPEED / HIGH ACCURACY SECOND OPERATION MACHINE



Six-Station Turret

- ✦ High/Low Speed Quick Change Lever for Convenience.
- ✦ Six-Station Turret.
- ✦ Double Tool Cross Slide for Many Practical Applications.
- ✦ 229mm (9") swing over bed.
- ✦ The spindle is mounted in high precision preloaded angular contact ball bearings eliminating radial and end play.
- ✦ Fast lever collet chucking with a single movement.
- ✦ Variable spindle speeds 0-4000 RPM.
- ✦ Solid hardened and ground alloy tool steel bed.
- ✦ The preloaded ball bearing turret head eliminates all play between the turret head and the turret slide.
- ✦ Powerful 5 HP frequency controlled motor.

EA50907

CHR - 68EVS

HIGH SPEED / HIGH ACCURACY CHUCKING MACHINE

MANUAL MODEL



EA50903



Eight - Station Turret

- ✦ High/Low Speed Quick Change Lever for Convenience.
- ✦ A Heavy Duty Chucking Machine Produced to Meet High Precision Requirements.
- ✦ Variable Spindle Speeds!
- ✦ Variable Feed Speeds!
- ✦ 230mm (9") Maximum fixture diameter
- ✦ The spindle is mounted in high precision preloaded angular contact ball bearings eliminating radial and end play.
- ✦ Infinitely variable spindle speeds 0-4000 RPM.
- ✦ Fast lever collet chucking with a single movement.
- ✦ Preloaded ball bearing eight-station turret.
- ✦ Solid hardened and ground alloy tool steel bed.
- ✦ Independent electric variable feed.
- ✦ Full bearing carriage with Turcite-B slideway bearing surface.
- ✦ Powerful 5 HP frequency controlled motor

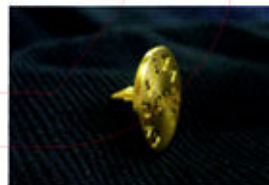
CP - 27EVS

HIGH PERFORMANCE FINISHING LATHE

MANUAL MODEL



EA50905



Marker

- ✦ A compact machine with proven design!
- ✦ Superior Surface Finish!
- ✦ 229mm (9") swing over bed
- ✦ 27mm (1-1/16") 5C collet capacity. Fast lever collet chucking.
- ✦ Hardened and ground precision alloy tool steel bed ways 229mm (9") length.
- ✦ Preloaded angular contact ball bearing spindle.
- ✦ Spindle speeds 0-4000 RPM
- ✦ Quick change spindle speeds.
- ✦ 1 HP frequency controlled motor

SPECIFICATIONS

MODEL	CT-1118CNC	CT-606CNC
Maximum Swing	280 mm (11")	200 mm (8")
Maximum Turning Diameter	150 mm (6")	150 mm (6")
Maximum Turning Length	457 mm (18")	150 mm (6")
Bar Stock Diameter (5C collet)	∅27 mm (∅1-1/16")	∅27 mm (∅1-1/16")
Hole Through Spindle	31.75 mm (∅1-1/4")	∅31.75 mm (∅1-1/4")
CNC Controller	FANUC	FANUC
Spindle Speeds (Variable)	0-4000 R.P.M.	0-4000 R.P.M.
Spindle Nose I.D./O.D.	5C (10') / 4' X Taper	5C (10') / 55.5mm(2-3/16")-10 R.H
Chuck Diameter	∅150 mm (∅6")	∅150mm (∅6")
Maximum X-axis Travel	155 mm (6-1/4")	200 mm (8")
Maximum Z-axis Travel	340 mm (13-1/2")	150 mm (6")
Rapid Traverse	20 M/min	20 M/min
Inverter Spindle Motor	3 HP	3 HP
X,Z-Axis Motor	X:∅2 Z:∅2	Optional
Coolant Pump	1/8 HP	1/8 HP
Tailstock Spindle Taper	MT No.2	-
Tailstock Spindle Travel	95mm(3-3/4")	-
Machine Dimensions (LxWxH)	2050 x 1000 x 1650 mm (81" x 40" x 65")	2050 x 1000 x 1650 mm (81" x 40" x 65")
Machine Weight	1200 kgs (2640 lbs.)	1100 kgs (2400 lbs.)

MODEL	CTL-618e	CTL-618EVS	CTS-27EVS / CTL-27EVS	CHR-68EVS	CP-27EVS	
Spindle Capacity	With Chuck	150mm (6")	150mm (6")	150mm (6")	127mm (5")	
	With Expanding Collets	76mm (3")	76mm (3")	76mm (3")	76mm (3")	
	With Round 5C Collets	27mm (1-1/16")	27mm (1-1/16")	27mm (1-1/16")	27mm (1-1/16")	27mm (1-1/16")
	With Hexagon 5C Collets	22mm (7/8")	22mm (7/8")	22mm (7/8")	22mm (7/8")	22mm (7/8")
	With Square 5C Collets	19mm (3/4")	19mm (3/4")	19mm (3/4")	19mm (3/4")	19mm (3/4")
With Step Chucks	27 - 152mm (1-1/16" - 6")	27 - 152mm (1-1/16" - 6")	27 - 152mm (1-1/16" - 6")	27 - 152mm (1-1/16" - 6")	27 - 152mm (1-1/16" - 6")	
Spindle Nose Diameter	∅55.5mm (∅2-3/16")	∅55.5mm (∅2-3/16")	∅55.5mm (∅2-3/16")	∅55.5mm (∅2-3/16")	∅55.5mm (∅2-3/16")	
Spindle Nose I.D./O.D.	5C (10') / 4' Taper	5C (10') / 4' Taper	5C (10') / 4' Taper	5C (10') / 55.5mm (2-3/16")-10 R.H	5C (10') / 4' Taper	
Spindle Speeds (Variable)	0-4000 R.P.M.	0-4000 R.P.M.	0-4000 R.P.M.	0-4000 R.P.M.	0-4000 R.P.M.	
Inverter Spindle Motor	3 HP	3 HP	3 HP	3 HP	1 HP	
Hole Through Spindle	31.75mm (1-1/4")	31.75mm (1-1/4")	31.75mm (1-1/4")	31.75mm (1-1/4")	-	
Bar Stock Diameter (5C collet)	∅27 mm (∅1-1/16")	∅27 mm (∅1-1/16")	∅27 mm (∅1-1/16")	∅27 mm (∅1-1/16")	∅27 mm (∅1-1/16")	
Distance Between Centers	457mm (18")	457mm (18")	380mm (15")	-	-	
Swing Over Bed	280mm (11")	280mm (11")	229mm (9")	330mm (13")	229mm (9")	
Swing Over Carriage	230mm (9")	230mm (9")	-	-	-	
Swing Over Cross Slide	152mm (6")	152mm (6")	-	-	-	
Carriage Power Feed Range	5-102mm (3/16" - 4")	5-102mm (3/16" - 4")	-	6-250mm (1/4" - 10")	-	
Cross Slide Power Feed Range	8-178mm (5/16" - 7")	8-178mm (5/16" - 7")	-	9-160mm (11/32" - 6-1/4")	-	
Cross Slide Travel	152mm (6")	152mm (6")	95mm(3-3/4")	114mm (4-1/2")	-	
Quick-action Compound Slide Travel	2.5mm (0.1")	2.5mm (0.1")	-	-	-	
Compound Slide Travel	76mm (3")	76mm (3")	-	X: 114 mm (4-1/2") Z: 140 mm (5-1/2")	-	
Coolant Pump	1/8 HP, 220V,3PH	1/8 HP, 220V,3PH	1/8 HP, 220V,3PH	1/8 HP, 220V,3PH	Optional	
Feed Motor	Inverter 1/2 HP	220V, 70W	-	220V, 70W	-	
Tailstock Spindle Travel	95mm (3-3/4")	95mm (3-3/4")	95mm (3-3/4")	-	-	
Range of Threads	0.2-6.35mm (120 - 4 TPI)	0.275-2.7mm (108 - 11TPI)	-	-	-	
Number of Thread Changes	-	36	-	-	-	
Net Weight (Approx)	1100 kgs (2420 lbs.)	1050 kgs (2300 lbs.)	450 kgs (990 lbs.)	1000 kgs (2200 lbs.)	300 kgs (660 lbs.)	
Gross Weight (Approx)	1200 kgs (2640 lbs.)	1150 kgs (2530 lbs.)	620 kgs (1364 lbs.)	1100 kgs (2420 lbs.)	370 kgs (820 lbs.)	
Machine Dimensions (LxWxH)	1850x750x1700mm (73" x 30" x 67")	1850x750x1700mm (73" x 30" x 67")	1750 x 700 x 1600mm (69" x 28" x 63")	1850 x 750 x 1700mm (73"x30"x67")	900 x 900 x 1400mm (36"x36"x55")	

*Due to the continuing innovations, product dimensions subject to change without further notice.



CYCLEMATIC

CYCLEMATIC MACHINERY CO., LTD.

20, Lane 50, Min Sheng RD., Shen Kang, Taichung, Taiwan.

TEL: 886-4-25625393 FAX: 886-4-25620298

E-mail: cycle-matic88@umail.hinet.net

http://www.toolroom.com.tw